

**ROE**  
CREATIVE DISPLAY



# Vanish Air Rental

A New Vision for Transparency

IN- & OUTDOOR LED PANELS



**18<sub>MM</sub>**

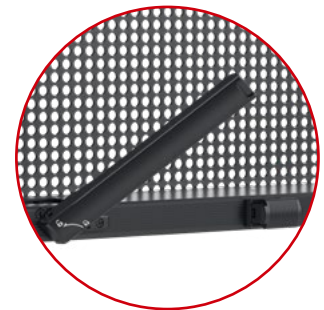
## A NEW VISION FOR TRANSPARENCY

Vanish Air Rental marks a generational leap in semi-transparent LED display design for the rental market. With no central PSU column and a frame just **18mm** thin, it introduces a power and structural system that achieves optimal transparency. Lightweight around **8.5kg** per square meter, Vanish Air Rental delivers a near-invisible structure that lets lighting, staging, and performance breathe freely.

# “OPTIMAL TRANSPARENCY”

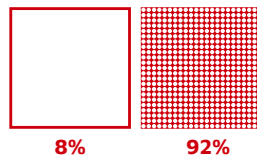
Built on a 1000x1000mm platform, Vanish Air Rental is the first rental LED panel to integrate and distribute power directly through a slim 18mm frame, completely eliminating the central PSU column. This innovation opens up a wider, clearer viewing area while also allowing greater light and sound permeability.

Specialized locks and strategically positioned connectors complete the system, ensuring seamless connection for an uninterrupted canvas of light.



**Specialized Locking Mechanism**

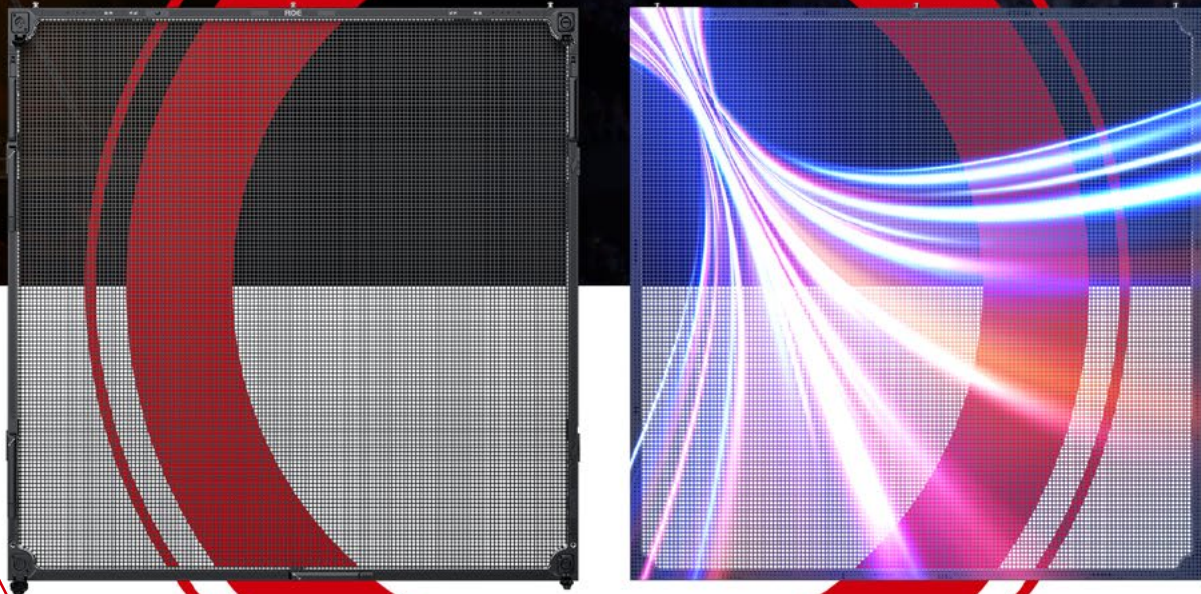
**Visual transparency**  
**92%**



To further enhance transparency, Vanish Air Rental replaces the traditional grille-style LED layout with a refined perforated LED design. From a distance of just **5-8 meters**, the panel structure visually disappears, delivering an unobstructed viewing experience, allowing stage lighting and scenography to take center stage.

## Quality in the Details

Equipped with black LEDs and GOB technology, Vanish Air Rental features a clean PCB layout designed for clarity and contrast. Stray light is minimized, reflections are controlled, and visuals appear crisp and accurate—without color shifting or trailing. The result is a pure, vibrant image that holds up on any stage.



**Brightness Perfected for  
Every Environment**

With a pixel pitch of 6.94 mm and brightness levels of up to 4000nits, Vanish Air Rental delivers consistent visual punch even in high ambient light. The added luminance compensates for the natural light loss found in transparent displays, ensuring content stays bold and visible while preserving the panel's signature open structure.

## Easy Installation

Each module is integrated into a 1-meter frame to streamline setup, alignment and transport. Ideal for fast-turnaround rental environments where efficiency is key.

Custom  
Locking  
Mechanism

Perforated  
Layout

Electronic  
Breakthrough

Ultra-  
Lightweight

Black LED  
and  
GOB technology

High-brightness

**GOB**

## Optional Blanking Plate

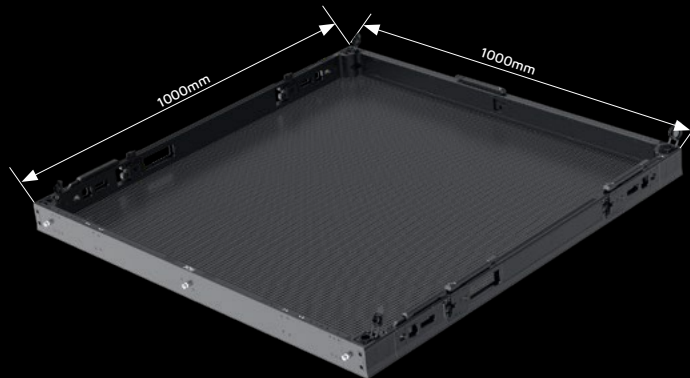
Vanish Air Rental's design flexibility extends beyond transparency. For projects that require a non-transparent display, an optional blanking plate can be easily attached to the rear of the panel. This transforms the screen from transparent to fully solid, offering a dual-purpose solution that maximizes investment and adaptability across diverse production needs.

## Specifications

Vanish Air Rental	Vanish Air Rental Indoor	Vanish Air Rental Outdoor
Pixel Pitch	6.94mm	6.94mm
Max Brightness Calibrated	4000nits	4000nits
Panel Dimension	1000mm x 1000mm x 79mm 39.4" x 39.4" x 3.11"	1000mm x 1000mm x 79mm 39.4" x 39.4" x 3.11"
Panel Resolution (H x V)	144 x 144	144 x 144
Panel Weight	8.5kg; 18.75lbs	11.8kg; 26.01lbs
Power Consumption Max / Average	650W / 325W	650W / 325W
Power Consumption Max / AVG	2110 / 1020	2110 / 1020
Physical Transparency	47%	44%
Visual Transparency	92%	92%
Serviceability	Full panel service	Full panel service
Curving (Concave & Convex)	Concave 5°, Convex 5°	Concave 5°, Convex 5°
Viewing Angle Horizontal	160°	160°
Viewing Angle Vertical	160°	160°
Scan Ratio	1/6	1/6
Refresh Rate	7680Hz	7680Hz
Gray Scale	16bit	16bit
Frame Material	Magnesium Alloy	Magnesium Alloy
Processing Platform	Brompton, Nova, Evision	Brompton, Nova, Evision
Operational Temp / Humidity	-20°-45°C, 10-90%RH   -4°-113°F, 10-90%RH	-20°-45°C, 10-90%RH   -4°-113°F, 10-90%RH
Storage Temp / Humidity	-40°-60°C, 10-90%RH   -40°-140°F, 10-90%RH	-40°-60°C, 10-90%RH   -40°-140°F, 10-90%RH
IP Rating	IP40	IP65
Certifications	CE, FCC, ETL, UKCA, RoHS, WEEE	CE, FCC, ETL, UKCA, RoHS, WEEE

Notes: The specifications are for reference, actual values may vary.

## Dimensions



[www.roevisual.com](http://www.roevisual.com)

ROE China | ROE US | ROE EU | ROE UK | ROE JP | ROE AUS

[roe@roevisual.com](mailto:roe@roevisual.com)